

Series 56000 Five

Ratings

Max Input Torque: 2000 lb-ft (2712 Nm) or clutch rating-dependent

Max Output Torque: 1500 lb-ft (2034 Nm) per pump pad

Max Input or Output Speed: 2500 rpm

Max Input Power: 950 hp (708 kW) or clutch rating-dependent

Max Output Power: 700 hp (522 kW) per pump pad

For further explanation of ratings, see service factors on page 5.

Pump rotation

Enginewise*

Oil

Any oil that meets EP gear lubrication specification MIL-L-2105 or API classification GL-5.

Approximate weight

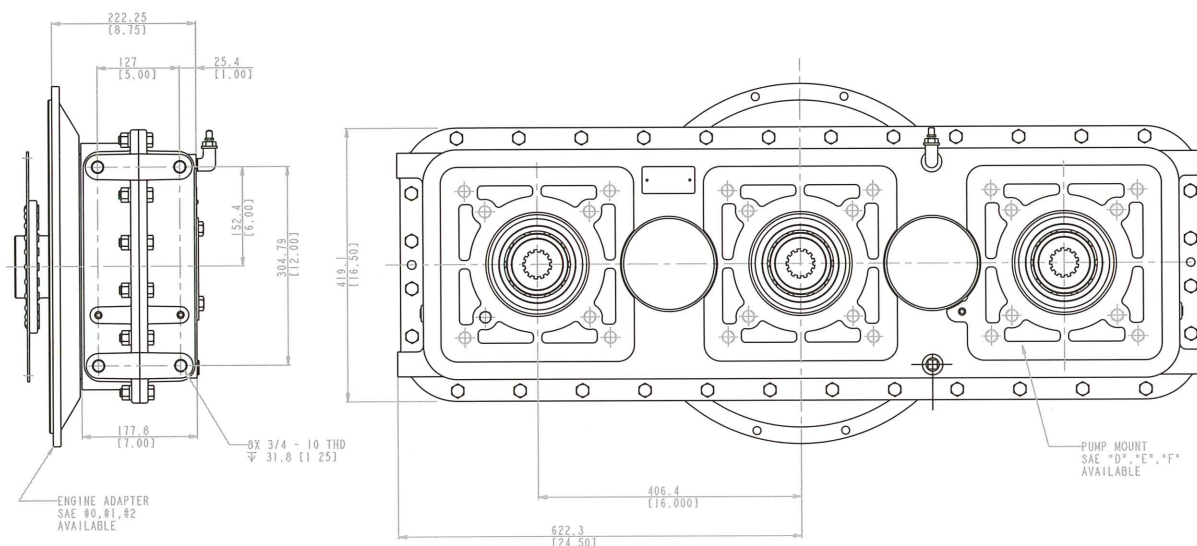
56012	615 lb (279 kg)
56013	580 lb (263 kg)
56011	775 lb (352 kg)

Option selections

Refer to pages 44 – 45.

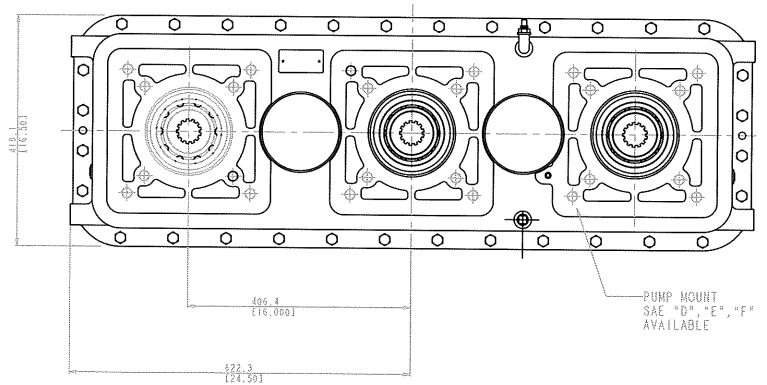
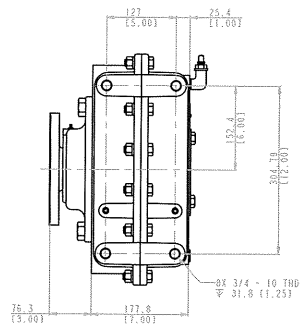
*NOTE: Engine side pump mounts on models 56011 and 56012 may be limited on pump size due to interference with adapter housing and/or engine components.

56012

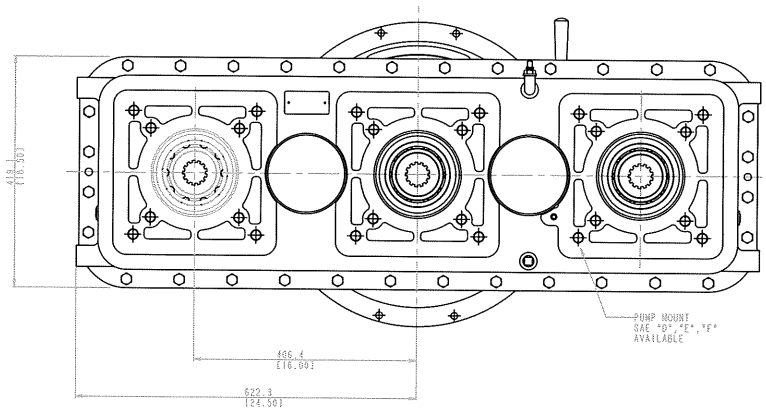
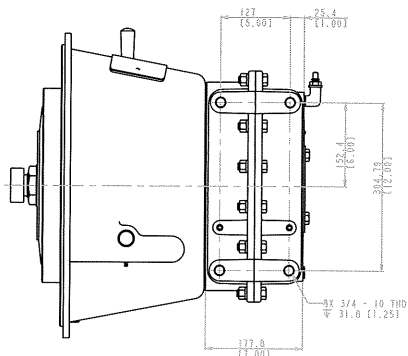


..... SPECIFICATIONS mm (in)

56013



56011

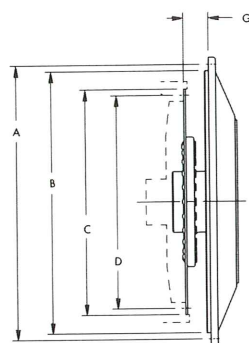


Series 56000 Option Selections

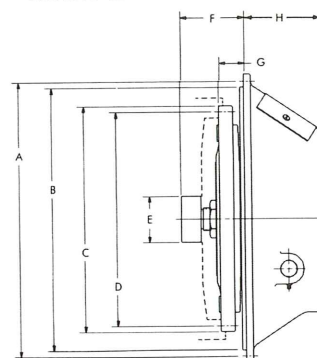
Input

FLYWHEEL COVER HOUSING in (mm)			
SAE Size	A Dimension	B Dimension	Bolts Required
0	26.750 (679.5)	25.500 (647.7)	16-1/2 (12.7)-13
1	20.875 (530.2)	20.125 (511.2)	12-7/16 (11.1)-14
2	18.375 (466.7)	17.625 (447.7)	12-3/8 (9.5)-16

Plate-driven



Clutch-driven



CLUTCH COVER HOUSING in (mm)				
SAE Size	A Dimension	B Dimension	H Dimension	Bolts Required
1	20.875 (530.2)	20.125 (511.2)	10.250 (260.4)	12-7/16 (11.1)-14

DRIVE PLATE ASSEMBLY in (mm)					
Nominal Clutch Size	C Dimension	D Dimension	G Dimension	Holes	Hole Size
11-1/2 (292.1)	13.875 (352.4)	13.125 (333.4)	1.56 (39.6)	8	13/32 (10.3)
14 (355.6)	18.375 (466.7)	17.250 (438.2)	1.00 (25.4)	16	17/32 (13.5)
18 (457.2)	22.5 (571.5)	21.375 (542.9)	.62 (15.7)	6	21/32 (16.7)

PUMP DRIVE CLUTCH DATA in (mm)									
Nominal Clutch Size	Clutch No.	Working Torque	C Dimension	D Dimension	E Dimension (Pilot Bearing)	F Dimension	G Dimension	Holes	Hole Size
11-1/2 (292.1)	T.D. SP-211	910 lb-ft (1233.1 Nm)	13.875 (352.4)	13.125 (333.4)	2.44 (62.0) or 2.83 (72.0)	3.94 (100.0)	1.56 (39.6)	8	13/32 (10.3)
14 (355.6)	T.D. SP-114	810 lb-ft (1097.6 Nm)	18.375 (466.7)	17.250 (438.2)	2.83 (72.0) or 3.15 (80.0)	3.94 (100.0)	1.00 (25.4)	8	17/32 (13.5)
14 (355.6)	T.D. SP-214	1620 lb-ft (2195 Nm)	18.375 (466.7)	17.250 (438.2)	2.83 (72.0) or 3.15 (80.0)	3.94 (100.0)	1.00 (25.4)	8	17/32 (13.5)

Output

PUMP FLANGE DATA in (mm)				
SAE Size	Pilot Size	B.C.D.	No. Holes	Tap Size
B	4.000 (101.6)	5.750 (146.1)	2	1/2 (12.7)-13
		5.000 (127.0)	4	1/2 (12.7)-13
C	5.000 (127.0)	7.125 (181.0)	2	5/8 (15.9)-11
		6.375 (161.9)	4	1/2 (12.7)-13
D	6.000 (152.4)	9.000 (228.6)	4	3/4 (19.1)-10
E	6.500 (165.1)	12.500 (317.5)	4	3/4 (19.1)-10
F	7.000 (177.8)	13.781 (350.0)	4	1 (25.4)-8

..... SPECIFICATIONS in (mm)

Gear ratios

56000 Double

1:1 1.14:1 1.31:1 0.76:1

56000 Triple

1:1 1.14:1 1.31:1 0.76:1

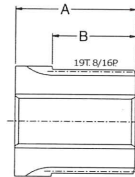
56000 Four

1:1 1.13:1 0.88:1

56000 Five

1:1 1.18:1 0.875:1

Spline Adapter



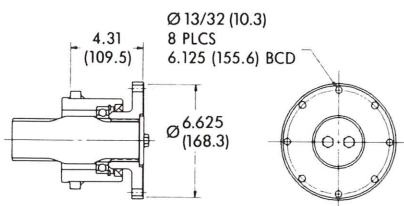
Output

PUMP ADAPTER SLEEVES in (mm)

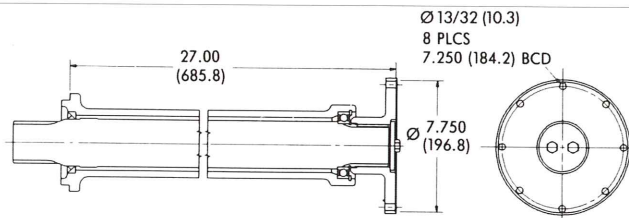
SAE Size	A Dim.	B Dim.	Internal Spline
BB*	4.25 (108.0)	1.88 (47.8)	15T. 16/32P.
B*	4.25 (108.0)	1.88 (47.8)	13T. 16/32P.
CC*	4.25 (108.0)	1.88 (47.8)	17T. 12/24P.
C*	4.25 (108.0)	1.88 (47.8)	14T. 12/24P.
D*	4.25 (108.0)	1.88 (47.8)	13T. 8/16P.
D	2.5 (63.5)	1.88 (47.8)	13T. 8/16P.
E	2.5 (63.5)	1.88 (47.8)	13T. 8/16P.
F	2.88 (73.2)	1.88 (47.8)	15T. 8/16P.

* These are for use with add-on adapter plates.

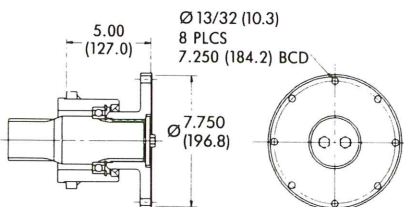
INPUT DRIVE ASSEMBLIES in (mm)



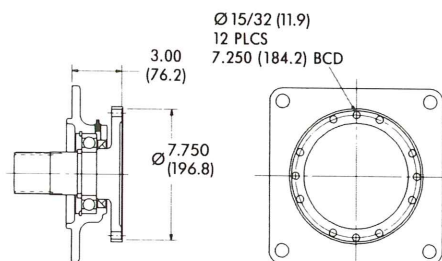
SPICER 1600, MECH 6C OR 7C FLANGE



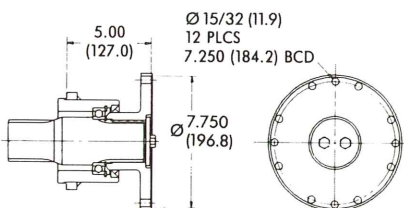
SPICER 1700, MECH 7C OR 8C FLANGE



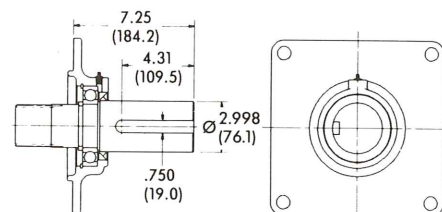
SPICER 1700, MECH 7C OR 8C FLANGE



SPICER 1800 OR 1850 FLANGE



SPICER 1800 OR 1850 FLANGE



Ø 3" KEYED SHAFT