

Series 56000 Five Deep Sump

Ratings

Max Input Torque: 2000 lb-ft (2712 Nm) or clutch rating-dependent

Max Output Torque: 1500 lb-ft (2034 Nm) per pump pad

Max Input or Output Speed: 2500 rpm

Max Input Power: 950 hp (708 kW) or clutch rating-dependent

Max Output Power: 700 hp (522 kW) per pump pad

For further explanation of ratings, see service factors on page 5.

Pump rotation

Enginewise*

Oil

John Deere HY-GARD or any oil that meets John Deere standard JDM J20C.

Approximate weight

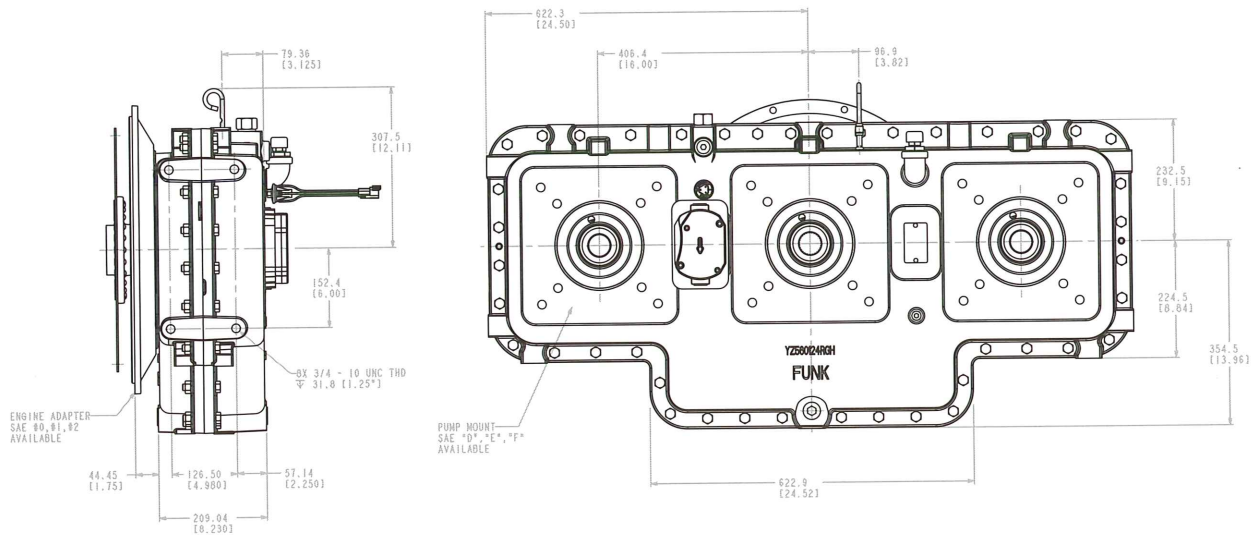
| | |
|---------|------------------|
| 565LXXP | 884 lb (402 kg) |
| 565LXR | 849 lb (386 kg) |
| 565LXXC | 1044 lb (475 kg) |

Option selections

Refer to pages 44 – 45.

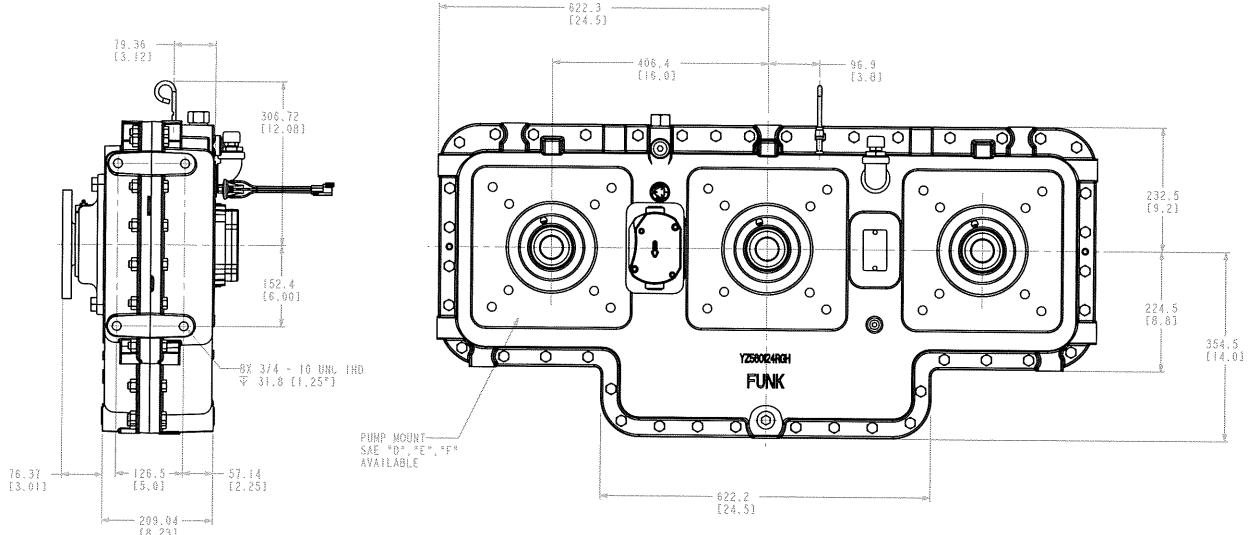
*NOTE: Engine side pump mounts on models 565LXXP and 565LXXC may be limited on pump size due to interference with adapter housing and/or engine components.

565LXXP

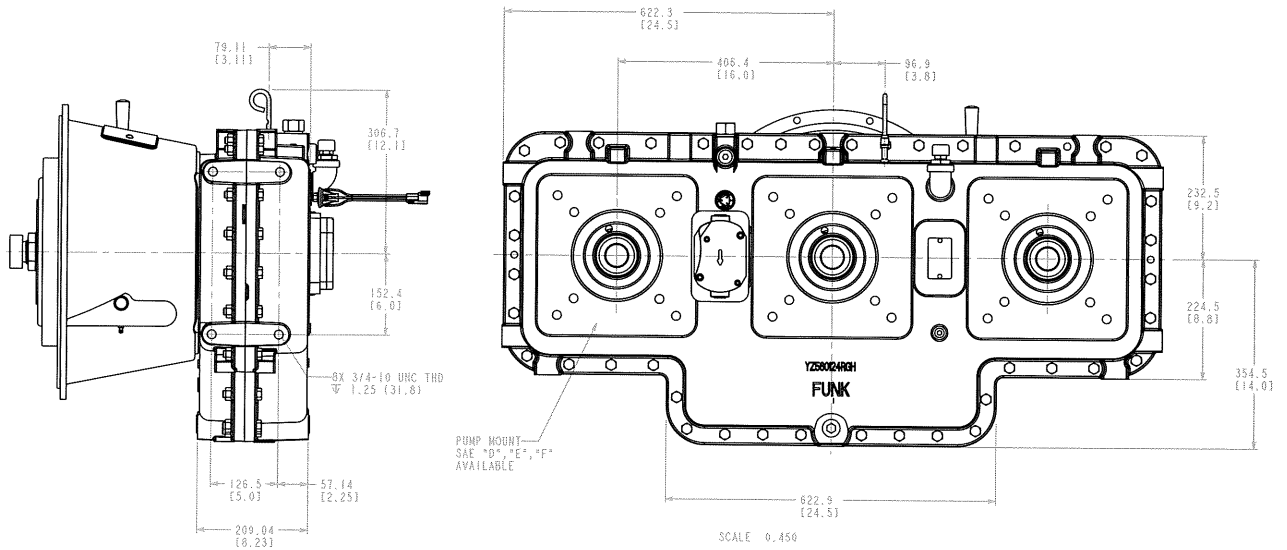


..... SPECIFICATIONS mm (in)

565LXR



565LXXC

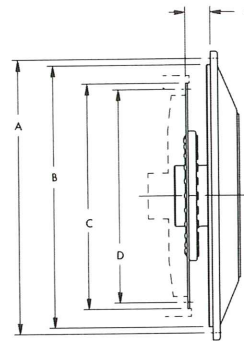


Series 56000 Option Selections

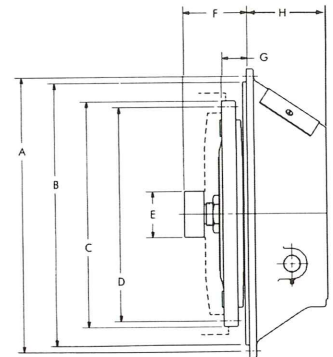
Input

| FLYWHEEL COVER HOUSING in (mm) | | | |
|--------------------------------|----------------|----------------|-------------------|
| SAE Size | A Dimension | B Dimension | Bolts Required |
| 0 | 26.750 (679.5) | 25.500 (647.7) | 16-1/2 (12.7)-13 |
| 1 | 20.875 (530.2) | 20.125 (511.2) | 12-7/16 (11.1)-14 |
| 2 | 18.375 (466.7) | 17.625 (447.7) | 12-3/8 (9.5)-16 |

Plate-driven



Clutch-driven



| CLUTCH COVER HOUSING in (mm) | | | | |
|------------------------------|----------------|----------------|----------------|-------------------|
| SAE Size | A Dimension | B Dimension | H Dimension | Bolts Required |
| 1 | 20.875 (530.2) | 20.125 (511.2) | 10.250 (260.4) | 12-7/16 (11.1)-14 |

| DRIVE PLATE ASSEMBLY in (mm) | | | | | |
|------------------------------|----------------|----------------|-------------|-------|--------------|
| Nominal Clutch Size | C Dimension | D Dimension | G Dimension | Holes | Hole Size |
| 11-1/2 (292.1) | 13.875 (352.4) | 13.125 (333.4) | 1.56 (39.6) | 8 | 13/32 (10.3) |
| 14 (355.6) | 18.375 (466.7) | 17.250 (438.2) | 1.00 (25.4) | 16 | 17/32 (13.5) |
| 18 (457.2) | 22.5 (571.5) | 21.375 (542.9) | .62 (15.7) | 6 | 21/32 (16.7) |

| PUMP DRIVE CLUTCH DATA in (mm) | | | | | | | | | |
|--------------------------------|-------------|-----------------------|----------------|----------------|-----------------------------|--------------|-------------|-------|--------------|
| Nominal Clutch Size | Clutch No. | Working Torque | C Dimension | D Dimension | E Dimension (Pilot Bearing) | F Dimension | G Dimension | Holes | Hole Size |
| 11-1/2 (292.1) | T.D. SP-211 | 910 lb-ft (1233.1 Nm) | 13.875 (352.4) | 13.125 (333.4) | 2.44 (62.0) or 2.83 (72.0) | 3.94 (100.0) | 1.56 (39.6) | 8 | 13/32 (10.3) |
| 14 (355.6) | T.D. SP-114 | 810 lb-ft (1097.6 Nm) | 18.375 (466.7) | 17.250 (438.2) | 2.83 (72.0) or 3.15 (80.0) | 3.94 (100.0) | 1.00 (25.4) | 8 | 17/32 (13.5) |
| 14 (355.6) | T.D. SP-214 | 1620 lb-ft (2195 Nm) | 18.375 (466.7) | 17.250 (438.2) | 2.83 (72.0) or 3.15 (80.0) | 3.94 (100.0) | 1.00 (25.4) | 8 | 17/32 (13.5) |

Output

| PUMP FLANGE DATA in (mm) | | | | |
|--------------------------|---------------|----------------|-----------|---------------|
| SAE Size | Pilot Size | B.C.D. | No. Holes | Tap Size |
| B | 4.000 (101.6) | 5.750 (146.1) | 2 | 1/2 (12.7)-13 |
| | | 5.000 (127.0) | 4 | 1/2 (12.7)-13 |
| C | 5.000 (127.0) | 7.125 (181.0) | 2 | 5/8 (15.9)-11 |
| | | 6.375 (161.9) | 4 | 1/2 (12.7)-13 |
| D | 6.000 (152.4) | 9.000 (228.6) | 4 | 3/4 (19.1)-10 |
| E | 6.500 (165.1) | 12.500 (317.5) | 4 | 3/4 (19.1)-10 |
| F | 7.000 (177.8) | 13.781 (350.0) | 4 | 1 (25.4)-8 |

SPECIFICATIONS in (mm)

Gear ratios

56000 Double

1:1 1.14:1 1.31:1 0.76:1

56000 Triple

1:1 1.14:1 1.31:1 0.76:1

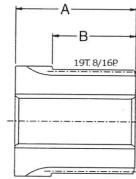
56000 Four

1:1 1.13:1 0.88:1

56000 Five

1:1 1.18:1 0.875:1

Spline Adapter

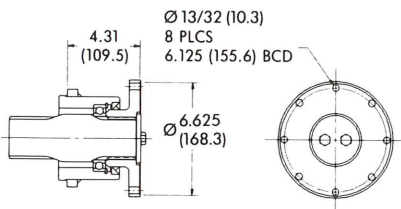


Output

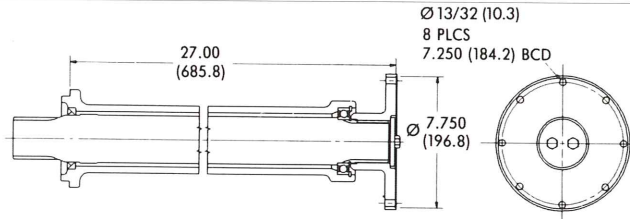
| PUMP ADAPTER SLEEVES in (mm) | | | |
|------------------------------|--------------|-------------|-----------------|
| SAE Size | A Dim. | B Dim. | Internal Spline |
| BB* | 4.25 (108.0) | 1.88 (47.8) | 15T. 16/32P. |
| B* | 4.25 (108.0) | 1.88 (47.8) | 13T. 16/32P. |
| CC* | 4.25 (108.0) | 1.88 (47.8) | 17T. 12/24P. |
| C* | 4.25 (108.0) | 1.88 (47.8) | 14T. 12/24P. |
| D* | 4.25 (108.0) | 1.88 (47.8) | 13T. 8/16P. |
| D | 2.5 (63.5) | 1.88 (47.8) | 13T. 8/16P. |
| E | 2.5 (63.5) | 1.88 (47.8) | 13T. 8/16P. |
| F | 2.88 (73.2) | 1.88 (47.8) | 15T. 8/16P. |

* These are for use with add-on adapter plates.

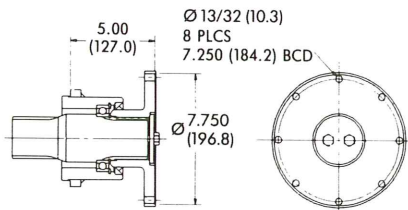
INPUT DRIVE ASSEMBLIES in (mm)



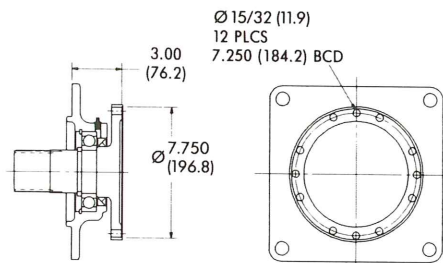
SPICER 1600, MECH 6C OR 7C FLANGE



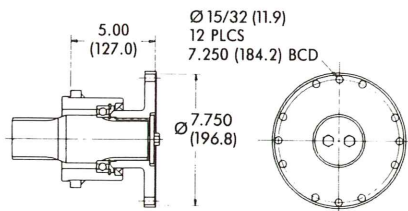
SPICER 1700, MECH 7C OR 8C FLANGE



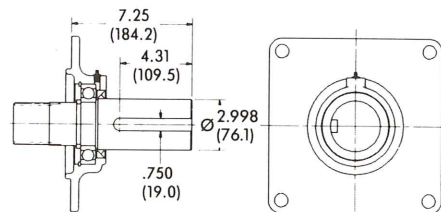
SPICER 1700, MECH 7C OR 8C FLANGE



SPICER 1800 OR 1850 FLANGE



SPICER 1800 OR 1850 FLANGE



Ø 3" KEYED SHAFT