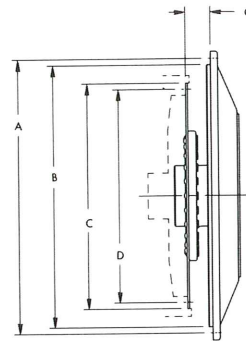


Series 56000 Option Selections

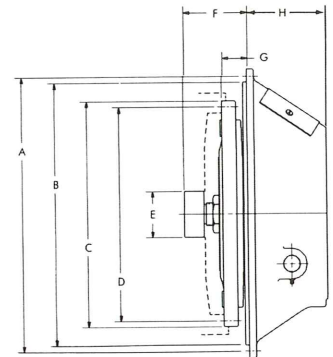
Input

FLYWHEEL COVER HOUSING in (mm)			
SAE Size	A Dimension	B Dimension	Bolts Required
0	26.750 (679.5)	25.500 (647.7)	16-1/2 (12.7)-13
1	20.875 (530.2)	20.125 (511.2)	12-7/16 (11.1)-14
2	18.375 (466.7)	17.625 (447.7)	12-3/8 (9.5)-16

Plate-driven



Clutch-driven



CLUTCH COVER HOUSING in (mm)				
SAE Size	A Dimension	B Dimension	H Dimension	Bolts Required
1	20.875 (530.2)	20.125 (511.2)	10.250 (260.4)	12-7/16 (11.1)-14

DRIVE PLATE ASSEMBLY in (mm)					
Nominal Clutch Size	C Dimension	D Dimension	G Dimension	Holes	Hole Size
11-1/2 (292.1)	13.875 (352.4)	13.125 (333.4)	1.56 (39.6)	8	13/32 (10.3)
14 (355.6)	18.375 (466.7)	17.250 (438.2)	1.00 (25.4)	16	17/32 (13.5)
18 (457.2)	22.5 (571.5)	21.375 (542.9)	.62 (15.7)	6	21/32 (16.7)

PUMP DRIVE CLUTCH DATA in (mm)									
Nominal Clutch Size	Clutch No.	Working Torque	C Dimension	D Dimension	E Dimension (Pilot Bearing)	F Dimension	G Dimension	Holes	Hole Size
11-1/2 (292.1)	T.D. SP-211	910 lb-ft (1233.1 Nm)	13.875 (352.4)	13.125 (333.4)	2.44 (62.0) or 2.83 (72.0)	3.94 (100.0)	1.56 (39.6)	8	13/32 (10.3)
14 (355.6)	T.D. SP-114	810 lb-ft (1097.6 Nm)	18.375 (466.7)	17.250 (438.2)	2.83 (72.0) or 3.15 (80.0)	3.94 (100.0)	1.00 (25.4)	8	17/32 (13.5)
14 (355.6)	T.D. SP-214	1620 lb-ft (2195 Nm)	18.375 (466.7)	17.250 (438.2)	2.83 (72.0) or 3.15 (80.0)	3.94 (100.0)	1.00 (25.4)	8	17/32 (13.5)

Output

PUMP FLANGE DATA in (mm)				
SAE Size	Pilot Size	B.C.D.	No. Holes	Tap Size
B	4.000 (101.6)	5.750 (146.1)	2	1/2 (12.7)-13
		5.000 (127.0)	4	1/2 (12.7)-13
C	5.000 (127.0)	7.125 (181.0)	2	5/8 (15.9)-11
		6.375 (161.9)	4	1/2 (12.7)-13
D	6.000 (152.4)	9.000 (228.6)	4	3/4 (19.1)-10
E	6.500 (165.1)	12.500 (317.5)	4	3/4 (19.1)-10
F	7.000 (177.8)	13.781 (350.0)	4	1 (25.4)-8

SPECIFICATIONS in (mm)

Gear ratios

56000 Double

1:1 1.14:1 1.31:1 0.76:1

56000 Triple

1:1 1.14:1 1.31:1 0.76:1

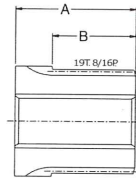
56000 Four

1:1 1.13:1 0.88:1

56000 Five

1:1 1.18:1 0.875:1

Spline Adapter



Output

PUMP ADAPTER SLEEVES in (mm)			
SAE Size	A Dim.	B Dim.	Internal Spline
BB*	4.25 (108.0)	1.88 (47.8)	15T. 16/32P.
B*	4.25 (108.0)	1.88 (47.8)	13T. 16/32P.
CC*	4.25 (108.0)	1.88 (47.8)	17T. 12/24P.
C*	4.25 (108.0)	1.88 (47.8)	14T. 12/24P.
D*	4.25 (108.0)	1.88 (47.8)	13T. 8/16P.
D	2.5 (63.5)	1.88 (47.8)	13T. 8/16P.
E	2.5 (63.5)	1.88 (47.8)	13T. 8/16P.
F	2.88 (73.2)	1.88 (47.8)	15T. 8/16P.

* These are for use with add-on adapter plates.

INPUT DRIVE ASSEMBLIES in (mm)

SPICER 1600, MECH 6C OR 7C FLANGE
 Dimensions: 4.31 (109.5), $\varnothing 13/32$ (10.3) 8 PLCS, 6.125 (155.6) BCD, $\varnothing 6.625$ (168.3)

SPICER 1700, MECH 7C OR 8C FLANGE
 Dimensions: 27.00 (685.8), $\varnothing 13/32$ (10.3) 8 PLCS, 7.250 (184.2) BCD, $\varnothing 7.750$ (196.8)

SPICER 1700, MECH 7C OR 8C FLANGE
 Dimensions: 5.00 (127.0), $\varnothing 13/32$ (10.3) 8 PLCS, 7.250 (184.2) BCD, $\varnothing 7.750$ (196.8)

SPICER 1800 OR 1850 FLANGE
 Dimensions: 3.00 (76.2), $\varnothing 15/32$ (11.9) 12 PLCS, 7.250 (184.2) BCD, $\varnothing 7.750$ (196.8)

SPICER 1800 OR 1850 FLANGE
 Dimensions: 5.00 (127.0), $\varnothing 15/32$ (11.9) 12 PLCS, 7.250 (184.2) BCD, $\varnothing 7.750$ (196.8)

SPICER 1800 OR 1850 FLANGE
 Dimensions: 7.25 (184.2), 4.31 (109.5), $\varnothing 2.998$ (76.1), .750 (19.0)

$\varnothing 3''$ KEYED SHAFT