

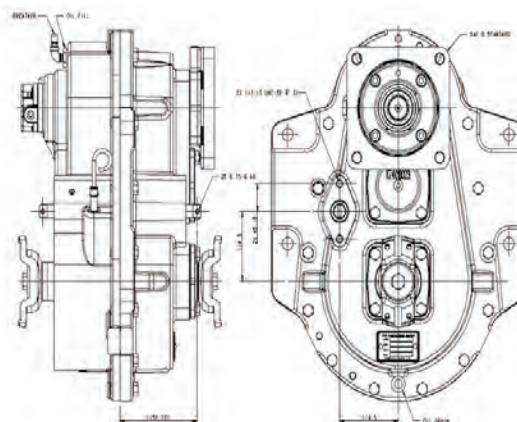
# Funk™ 18000 HMD Transmission

Industrial Drivetrain Specifications



**JOHN DEERE**

## Dimensions



## Ratings

Input power (max)	149 kW (200 hp)
Input torque (max)	949 Nm (700 lb-ft)
Input no load speed (max)	4000 rpm†

† depending on ratio

## General data

Motor adapters	SAE C and D
Approximate dry weight	161 kg (356 lb)
Oil Capacity	8.8 L (8 qt)
Oil type	J20C or MIL-L-2105-C or API classification GL-5
Speeds	2
Configuration	Drop 183 mm (11.15 in)
Shift options:	Hydraulic, Mechanical

## Gear ratio (helical gears, sliding collar shift)

Low	High
4.140	1.613
7.412	1.905

## Splines

Input	SAE 14-tooth 12/24 DP SAE 13-tooth 8/16 DP
Parking brake	Disc-type
Output fittings	6C, 7C yokes or companion flanges
Applications	Dozing machines, motor graders, railway vehicles, sweepers, pavers, and virtually any quipment requiring controlled travel speed

## Features and benefits

### Controlled ground speed at full engine power

- Available to use with applications up to 149 kW (200 hp)
- 4000 rpm max input, no load speed

### Multiple gear ratios in two-speed versions

- Covers low-speed working range through high-gear travel speeds
- Wide speed variance in each gear range

### Selection of SAE hydraulic input motor mountings

- SAE C and D mounts to utilize input hydraulics to best fit the application

### High-contact ratio helical gears

- Quieter operation of the transmission

## John Deere Power Systems

3801 W. Ridgeway Ave.  
PO Box 5100  
Waterloo, IA 50704-5100  
Phone: 800.553.6446  
Fax: 319.292.5075

*All values at rated speed and power with standard options unless otherwise noted.  
Specifications and design subject to change without notice.*