



Hydraulic Worm Gear Selection Chart

Performance Data

| Winch Rating (LBS) | Winch Model | Recommended Wire Rope Size (INCH) (MM) | Minimum System Pressure for Rated Pull (PSI) | Maximum System Flow (GPM) | Worm Gear Ratio | 1st Layer | | | 2nd Layer | | | 3rd Layer | | | 4th Layer | | | 5th Layer | | |
|--------------------|--|--|--|---------------------------|-----------------|-----------------------|-------------------------------------|------------------------|-----------------------|--|------------------------|-----------------------|---|------------------------|-----------------------|--|------------------------|-----------------------|---|-------------------------|
| | | | | | | Line Pull (LBS) (KGS) | Cable Cap. (Ft) (M) | Line Speed (FPM) (MPM) | Line Pull (LBS) (KGS) | Cable Cap. (Ft) (M) | Line Speed (FPM) (MPM) | Line Pull (LBS) (KGS) | Cable Cap. (Ft) (M) | Line Speed (FPM) (MPM) | Line Pull (LBS) (KGS) | Cable Cap. (Ft) (M) | Line Speed (FPM) (MPM) | Line Pull (LBS) (KGS) | Cable Cap. (Ft) (M) | Line Speed (FPM) (MPM) |
| * 3000 | H-7 | 1/4 6 | 750 | 15 | 38:1 | 3000 1350 | 10 3.0 | 16 5.0 | 2600 1170 | 20 6.0 | 19 5.8 | 2200 900 | 35 10.0 | 21 6.3 | 2000 900 | 50 15.0 | 24 7.2 | 1800 810 | 70 21.0 | 27 8.2 |
| * 4000 | HX-7 | 1/4 6 | 750 | 15 | 38:1 | 3000 1350 | 15 4.0 | 16 5.0 | 2600 1170 | 40 12.0 | 19 5.8 | 2200 900 | 65 19.0 | 21 6.3 | 2000 900 | 95 28.0 | 24 7.2 | 1800 810 | 125 38.0 | 27 8.2 |
| * 8000 | H-8B | 5/16 8 | 1000 | 15 | 38:1 | 4000 1810 | 15 4.0 | 17 5.1 | 3300 1490 | 30 9.0 | 20 6.0 | 2900 1310 | 55 16.0 | 23 6.9 | 2500 1130 | 80 24.0 | 26 7.9 | | | |
| 8000 | H-200 HY-200 | 3/8 9 | 1500 | 15 | 60:1 | 8000 3620 | 25 8.0 15 4.0 | 12 3.8 | 6700 3030 | 60 18.0 30 9.0 | 15 4.5 | 5700 2580 | 95 30.0 55 16.0 | 17 5.3 | 5000 2260 | 140 43.0 75 22.0 | 20 6.0 | | | |
| 8000 | H-246 HY-246 | 3/8 9 | 1800 | 15 | 46:1 | 8000 3620 | 25 8.0 15 4.0 | 16 5.0 | 6700 3030 | 60 18.0 30 9.0 | 19 5.9 | 5700 2580 | 95 30.0 55 16.0 | 22 6.6 | 5000 2260 | 140 43.0 75 22.0 | 26 7.9 | | | |
| 8000 | HD-200 HDY-200 (3.6 CU IN MOTOR) | 3/8 9 | 1700 | 15 | 30:1 | 8000 3620 | 25 8.0 15 4.0 | 32 9.7 | 6700 3030 | 60 18.0 30 9.0 | 38 11.5 | 5600 2520 | 95 30.0 55 16.0 | 45 13.7 | 5000 2260 | 140 43.0 75 22.0 | 51 15.5 | | | |
| 8000 | HD-234 HDY-234 (3.6 CU IN MOTOR) | 3/8 9 | 2375 | 15 | 34:1 | 8000 3620 | 25 8.0 15 4.0 | 28 8.5 | 6700 3030 | 60 18.0 30 9.0 | 34 10.3 | 5700 2610 | 95 30.0 55 16.0 | 39 11.8 | 5000 2260 | 140 43.0 75 22.0 | 44 13.3 | | | |
| 9000 | H-300 HY-300 | 3/8 9 | 1750 | 15 | 60:1 | 9000 4070 | 25 8.0 15 4.0 | 12 3.8 | 7500 3390 | 60 18.0 30 9.0 | 15 4.5 | 6400 2890 | 95 30.0 55 16.0 | 17 5.3 | 5600 2530 | 140 43.0 75 22.0 | 20 6.0 | | | |
| 9000 | H-346 HY-346 | 3/8 9 | 2000 | 15 | 46:1 | 9000 4070 | 25 8.0 15 4.0 | 16 5.0 | 7500 3390 | 60 18.0 30 9.0 | 19 5.9 | 6400 2890 | 95 30.0 55 16.0 | 22 6.6 | 5600 2530 | 140 43.0 75 22.0 | 26 7.9 | | | |
| 10,000 | HDG-350 HDGY-350 | 7/16 11 | 2000 | 15 | 30:1 | 10,000 4540 | 20 6.0 15 4.0 | 32 9.7 | 8100 3670 | 50 15.0 30 9.0 | 38 11.5 | 6900 3120 | 85 25.0 55 16.0 | 44 13.3 | | | | | | |
| A A 10,000 | H-400 HG-400 | 7/16 11 | 2800 | 23 | 29:1 | 10,000 4540 | 25 7.0 | 30 10.0 | 8200 3710 | 55 16.0 | 40 12.0 | 6900 3120 | 90 27.0 | 53 16.0 | 6000 2710 | 130 39.0 | 53 16.0 | | | |
| A* A* 10,000 | HY-400 HGY-400 | 7/16 11 | 3000 | 23 | 29:1 | 10,000 4540 | 20 6.0 | 33 10.5 | 8300 3760 | 45 13.0 | 40 12.3 | 7100 3210 | 70 21.0 | 47 14.5 | 6200 2800 | 105 31.0 | 54 16.0 | | | |
| A* A* 12,000 | H-600 HY-600 HX-600 | 1/2 13 | 2750 | 25 | 40:1 | 12,000 5430 | 20 6.0 15 4.0 30 9.0 | 25 7.6 | 9800 4430 | 55 16.0 40 12.0 65 19.0 | 31 9.4 | 8300 3750 | 90 27.0 65 19.0 110 33.0 | 37 11.2 | 7200 3260 | 130 39.0 95 28.0 165 50.0 | 42 12.7 | 6300 2850 | 180 54.0 135 39.0 225.0 68.0 | 48 14.5 |
| A* A* 15,000 | H-700 HX-700 | 9/16 14 | 2750 | 30 | 35:1 | 15,000 6790 | 20 6.0 35 10.0 | 27 8.2 | 12,300 5570 | 50 15.0 75 22.0 | 33 10.0 | 10,500 4750 | 85 25.0 125 38.0 | 38 11.5 | 9100 4120 | 125 38.0 185 56.0 | 44 13.3 | 8100 3660 | 170 51.0 250 76.0 | 50 15.2 |
| A* A* 20,000 | H-800 HY-800 | 5/8 16 | 2200 | 30 | 40:1 | 20,000 9060 | 35 10.0 20 6.0 | 18 5.4 18 5.5 | 16,600 7520 | 75 22.0 45 13.0 | 22 6.6 21 6.3 | 14,200 6430 | 125 38.0 75 22.0 | 26 7.9 25 7.6 | 12,400 5610 | 180 54 110 33 | 29 8.8 28 8.5 | 11,000 4980 | 240 72.0 150 45.0 | 33 10.0 31 9.4 |
| 30,000 | H-930 | 3/4 19 | 2500 | 35 | 41:1 | 30,000 13,590 | 25 7.0 | 13 3.9 | 24,500 11,090 | 65 19.0 | 17 5.3 | 20,700 9370 | 105 31.0 | 20 6.0 | 18,000 8150 | 155 47.0 | 24 7.2 | | | |

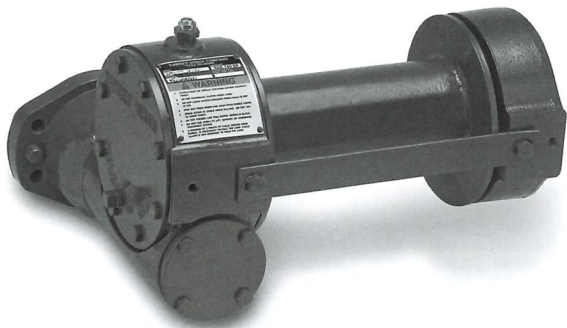
* Last layer does not conform to SAE Standard J706.
A-Standard rating listed. Higher SAE J706 ratings available-contact factory.

RAMSEY WINCH



H-7 Series

- Rated Line pull 3,000lbs
- Recommended cable 1/4"
- Blocked Clutch
- Meets SAE-J706
- Made in the USA

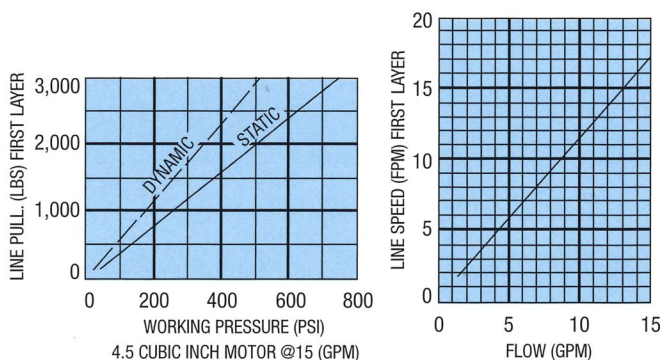


Applications

- Towing & Recovery
- Forestry
- Construction
- Petroleum
- Mining
- Refuse

Hydraulic Systems Performance

H7/Hx7 Models only



Specifications

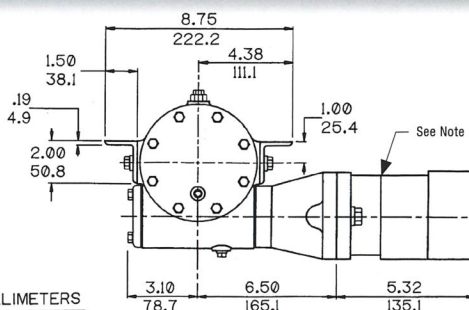
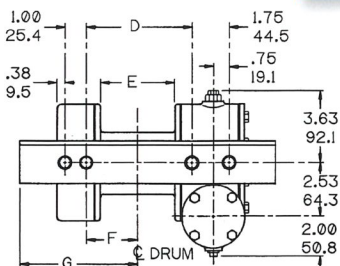
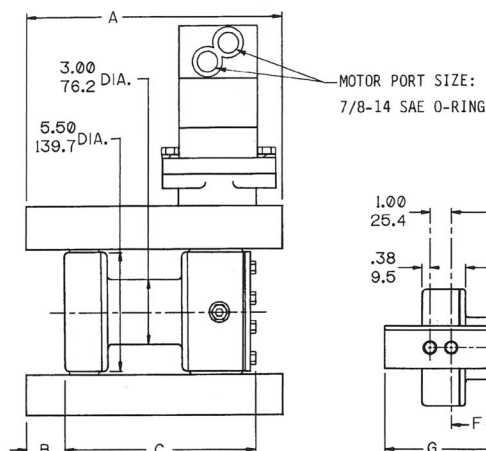
| | |
|------------------------|---|
| Rated Line Pull | 3,000 lbs..... (1,350 kgs) |
| Gear Reduction | 38:1 |
| Weight (without cable) | H-7..... 35 lbs. (16 kgs) HX-7..... 42 lbs. (19 kgs) |

| LAYER OF CABLE | | 1 | 2 | 3 | 4 | 5** |
|--|----------------|----------------|----------------|--------------|--------------|--------------|
| RATED LINE PULL PER LAYER | Lbs. Kgs. | 3,000 1,350 | 2,600 1,170 | 2,200 990 | 2,000 900 | 1,800 810 |
| *H-7 DRUM CABLE CAPACITY PER LAYER 3 1/2" DRUM | Ft. M. | 10 3.0 | 20 6.0 | 35 10.0 | 50 15.0 | 70 21.0 |
| *HX-7 DRUM CABLE CAPACITY PER LAYER 6 7/16" DRUM | Ft. M. | 15 4.0 | 40 12.0 | 65 19.0 | 95 28.0 | 125 38.0 |
| LINE SPEED | Worm RPM (MPM) | FPM (MPM) | FPM (MPM) | FPM (MPM) | FPM (MPM) | FPM (MPM) |
| H-7/HX-7 MODELS | 750 | 16 (5.0) | 19 (5.8) | 21 (6.3) | 24 (7.2) | 27 (8.2) |

* These specifications are based on recommended cable of (6mm) 1/4" galvanized aircraft cable
** 5th Layer does not conform to SAE J706

Overall Dimensions

H7/Hx7 Models only



DIMENSIONS SHOWN ARE INCHES OVER MILLIMETERS

| WINCH MODEL | A INCHES MM | B INCHES MM | C INCHES MM | D INCHES MM | E INCHES MM | F INCHES MM | G INCHES MM |
|-------------|----------------|--------------|----------------|---------------|---------------|--------------|---------------|
| H-7 | 12.00 304.8 | 1.75 44.5 | 8.96 227.6 | 4.94 125.5 | 3.50 88.9 | 2.41 61.2 | 5.54 140.7 |
| HX-7 | 18.00 457.2 | 3.25 82.6 | 11.90 302.3 | 7.88 200.2 | 6.44 163.5 | 3.88 98.6 | 8.50 215.9 |

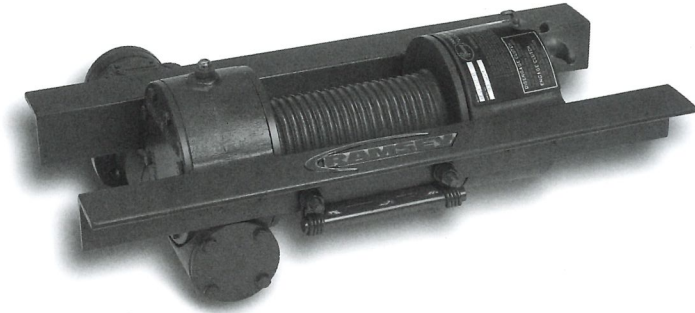
Note: Motor shown for H-7/HX-7 models only. 7X-7 models have a .75 DIA keyed shaft.

RAMSEY WINCH



H-8 Series

- Rated Line pull 4,000lbs
- Recommended cable 5/16"
- Meets SAE-J706
- Made in the USA

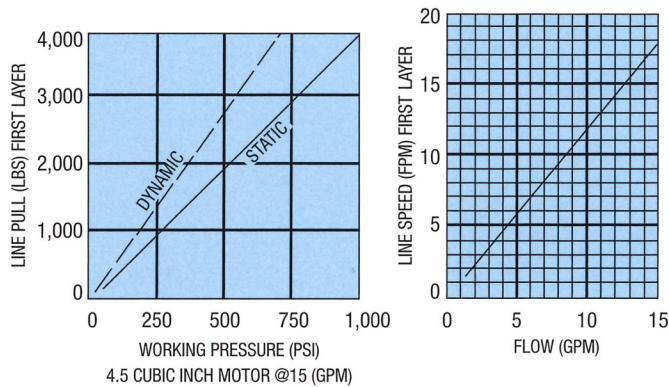


Applications

- Towing & Recovery
- Forestry
- Construction
- Petroleum
- Mining
- Refuse

Hydraulic Systems Performance

H-8B Models only



Specifications

| | |
|------------------------|-----------------------------|
| Rated Line Pull | 4,000 lbs..... (1,810 kgs) |
| Gear Reduction | 38:1 |
| Weight (without cable) | H-8B..... .75 lbs. (34 kgs) |

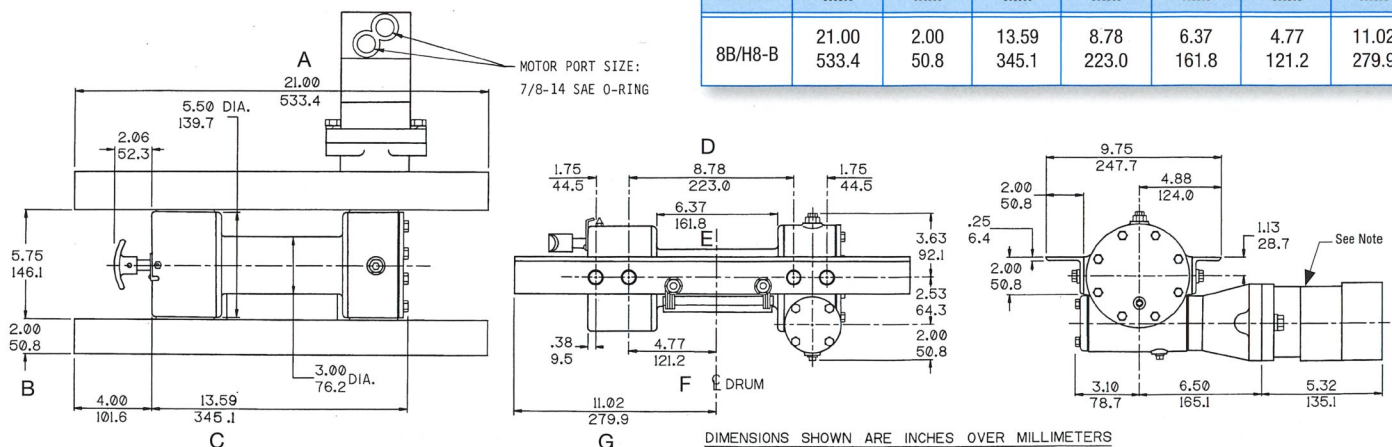
| LAYER OF CABLE | | 1 | 2 | 3 | 4** |
|---|-----------------------|----------------|----------------|----------------|----------------|
| RATED LINE PULL PER LAYER | Lbs. Kgs. | 4,000 1,810 | 3,300 1,490 | 2,900 1,310 | 2,500 1,130 |
| *DRUM CABLE CAPACITY PER LAYER 6 3/8" DRUM | Ft. M. | 15 4.0 | 30 9.0 | 55 16.0 | 80 24.0 |
| LINE SPEED | Worm RPM FPM (MPM) | FPM (MPM) | FPM (MPM) | FPM (MPM) | FPM (MPM) |
| H-8B MODELS | 750 | 17 (5.1) | 20 (6.0) | 23 (6.9) | 26 (7.9) |

* These specifications are based on recommended 5/16" diameter EIPS cable.
** 4th Layer does not conform to SAE J706

Overall Dimensions

H-8B Models only

| WINCH MODEL | A INCHES MM | B INCHES MM | C INCHES MM | D INCHES MM | E INCHES MM | F INCHES MM | G INCHES MM |
|-------------|----------------|----------------|----------------|----------------|----------------|----------------|----------------|
| 8B/H8-B | 21.00 533.4 | 2.00 50.8 | 13.59 345.1 | 8.78 223.0 | 6.37 161.8 | 4.77 121.2 | 11.02 279.9 |

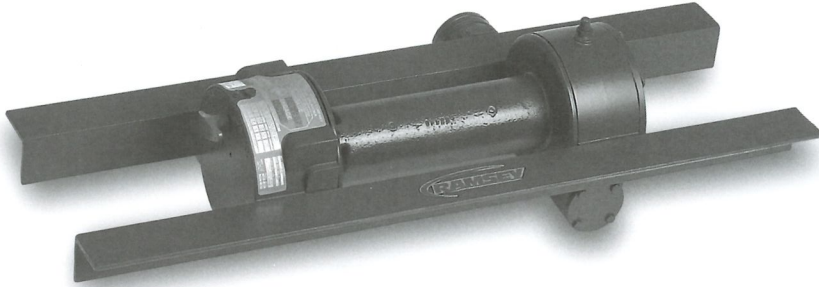


Note: Motor shown for H-8B models only.

RAMSEY WINCH

H-200 Series

- Rated Line pull 8,000lbs
- Meets SAE-J706
- Recommended cable 3/8"
- Made in the USA

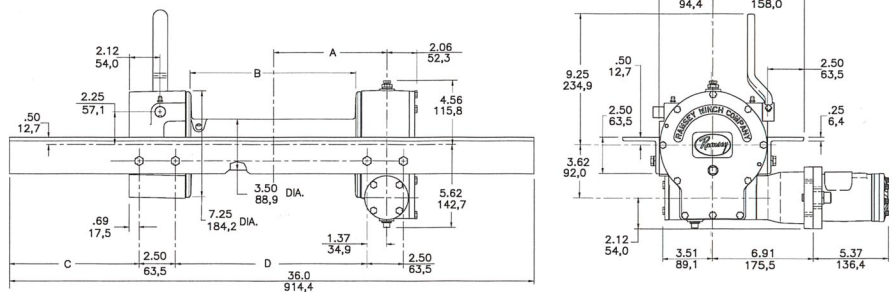


Applications

- Towing & Recovery
- Mining
- Petroleum
- Construction
- Forestry
- Refuse

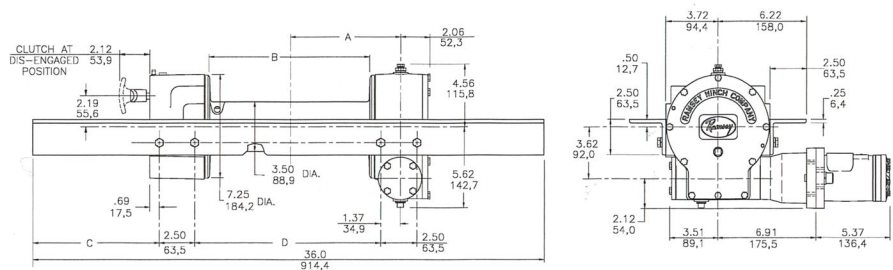
Overall Dimensions H-200/HY-200 Models only

| WINCH MODEL | A INCHES MM | B INCHES MM | C INCHES MM | D INCHES MM |
|-------------|----------------|----------------|----------------|----------------|
| H-200 | 7.78 197.6 | 11.31 287.3 | 8.94 227.0 | 13.12 333.3 |
| HY-200 | 5.28 134.1 | 6.31 160.3 | 11.44 290.5 | 8.12 206.3 |



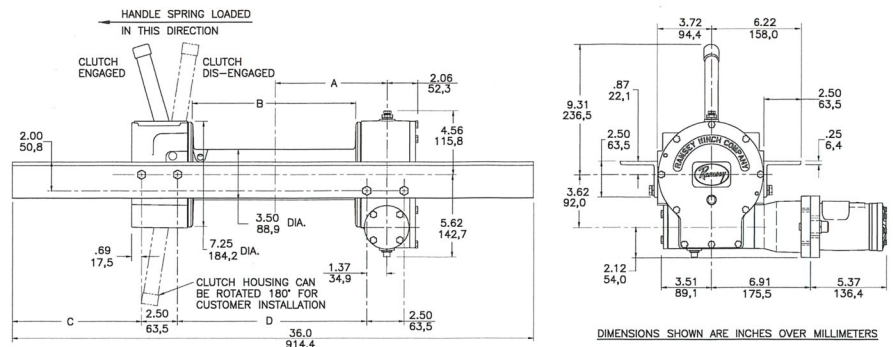
DIMENSIONS SHOWN ARE INCHES OVER MILLIMETERS

Lever Style Clutch



DIMENSIONS SHOWN ARE INCHES OVER MILLIMETERS

RAM-LOK® Clutch



DIMENSIONS SHOWN ARE INCHES OVER MILLIMETERS

DOW-LOK® Clutch



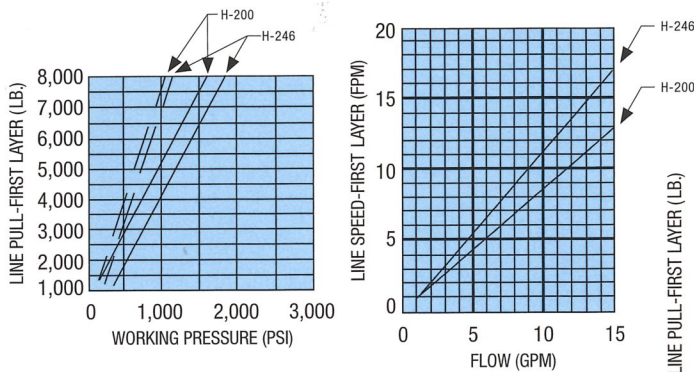
Specifications

| | |
|------------------------|--|
| Rated Line Pull | 8,000 lbs. (3,620 kgs) |
| Gear Reduction | H-200.....60:1 H-246.....46:1 HD-200.....30:1 HD-234.....34:1 |
| Weight | H-200/H-246/HD-200/HD-234.....110 lbs. (50 kgs) HY-200/HY-246/HDY-200/HDY-234.....105 lbs. (48 kgs) |

| LAYER OF CABLE | | 1 | 2 | 3 | 4 | |
|---|------|----------|-------|-------|-------|------|
| RATED LINE PULL PER LAYER | Lbs. | 8,000 | 6,700 | 5,700 | 5,000 | |
| | Kgs. | 3,620 | 3,030 | 2,610 | 2,290 | |
| LONG DRUM CABLE CAPACITY PER LAYER 11 5/16" DRUM | Ft. | 25 | 60 | 95 | 140 | |
| | M. | 8.0 | 18.0 | 30.0 | 43.0 | |
| SHORT "Y" DRUM CABLE CAPACITY PER LAYER 6 5/16" DRUM | Ft. | 15 | 30 | 55 | 75 | |
| | M. | 4.0 | 9.0 | 16.0 | 22.0 | |
| LINE SPEED | | Worm RPM | 1 | 2 | 3 | 4 |
| H-200 | FPM | 750 | 12 | 15 | 17 | 20 |
| | MPM | | 3.8 | 4.5 | 5.3 | 6.0 |
| H-246 | FPM | 750 | 16 | 19 | 22 | 26 |
| | MPM | | 5.0 | 5.9 | 6.6 | 7.9 |
| ** HD-200 | FPM | 750 | 32 | 38 | 45 | 51 |
| | MPM | | 7.6 | 9.1 | 10.6 | 12.1 |
| ** HD-234 | FPM | 750 | 28 | 34 | 39 | 44 |
| | MPM | | 8.5 | 10.3 | 11.8 | 13.3 |

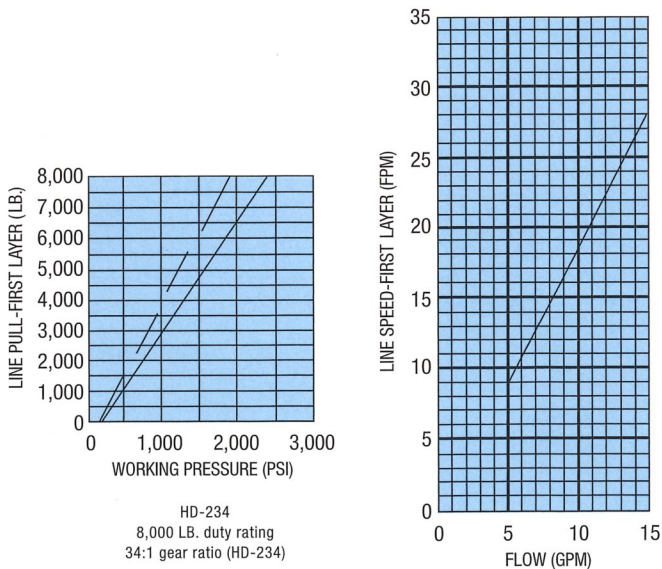
Hydraulic Systems Performance

H-200/H-246/HD-200/HD-234/HY-200/HY-246/HDY-200/HDY-234 Models only

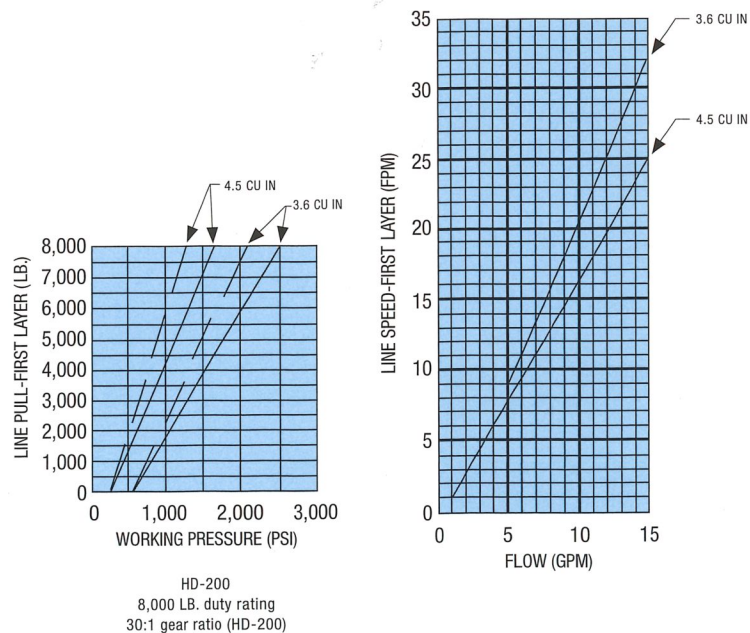


H-200 / H-246 Performance*
8,000 LB. duty rating
60:1 gear ratio (H-200)
46:1 gear ratio (H-246)

* Performance based on a motor displacement of 4.5 CU in with 15 GPM maximum flow rate.



HD-234
8,000 LB. duty rating
34:1 gear ratio (HD-234)



HD-200
8,000 LB. duty rating
30:1 gear ratio (HD-200)

* Performance based on a motor displacement of 3.6 CU in with 15 GPM maximum flow rate.

| LEGEND | |
|--------|---------|
| — | DYNAMIC |
| — | STATIC |

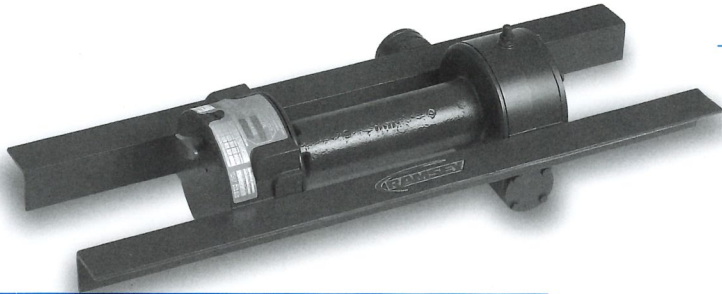
* Performance based on a motor displacement of 3.6 and 4.5 CU in with 15 GPM maximum flow rate.

RAMSEY WINCH

H-300 Series



- Rated Line pull 9,000lbs
- Meets SAE-J706
- Recommended cable 3/8"
- Made in the USA

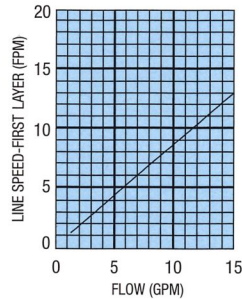
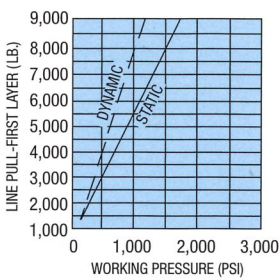


Applications

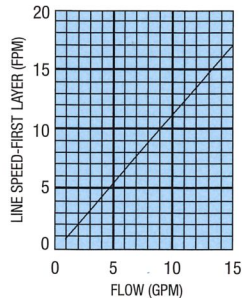
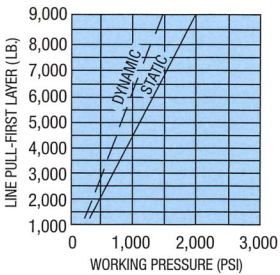
- Towing & Recovery
- Forestry
- Construction
- Petroleum
- Mining
- Refuse

Hydraulic Systems Performance

H-300/HY-300 Models only



H-300 Performance*
9,000 LB. duty rating
60:1 gear ratio



H-346 Performance*
9,000 LB. duty rating
46:1 gear ratio

LEGEND
— DYNAMIC
- - - STATIC

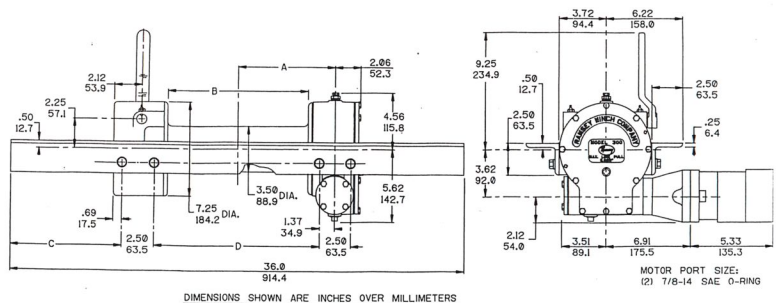
* Performance based on a motor displacement of 4.5 CU in with 15 GPM maximum flow rate.

Specifications

| | |
|------------------------|---|
| Rated Line Pull | 9,000 lbs..... (4,070 kgs) |
| Gear Reduction | H-300.....60:1 H-346.....46:1 |
| Weight | H-300/H-346..... 110 lbs. (50 kgs) HY-300/HY-346.....105 lbs. (48 kgs) |

| LAYER OF CABLE | | 1 | 2 | 3 | 4 | |
|---|------|----------|-------|-------|-------|------|
| RATED LINE PULL PER LAYER | Lbs. | 9,000 | 7,500 | 6,400 | 5,600 | |
| | Kgs. | 4,070 | 3,390 | 2,890 | 2,530 | |
| *LONG DRUM CABLE CAPACITY PER LAYER 11 5/16" DRUM | Ft. | 25 | 60 | 95 | 140 | |
| | M. | 8.0 | 18.0 | 30.0 | 43.0 | |
| *SHORT "Y" DRUM CABLE CAPACITY PER LAYER 6 5/16" DRUM | Ft. | 15 | 30 | 55 | 75 | |
| | M. | 4.0 | 9.0 | 16.0 | 22.0 | |
| LINE SPEED | | Worm RPM | 1 | 2 | 3 | 4 |
| H-300 | FPM | 750 | 12.6 | 15.1 | 17.5 | 20.0 |
| HY-300 | MPM | 750 | 3.8 | 4.5 | 5.3 | 6.0 |
| H-346 | FPM | 750 | 16.5 | 19.7 | 22.0 | 26.0 |
| HY-346 | MPM | 750 | 5.0 | 5.9 | 6.6 | 7.9 |

* These specifications are based on recommended 3/8 inch (9mm) EIPS cable.

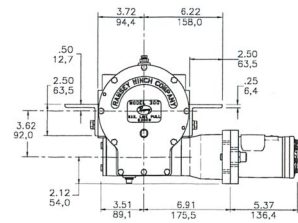
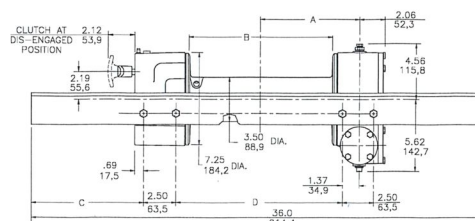


Overall Dimensions

H-300/HY-300 Models only

| WINCH MODEL | A INCHES MM | B INCHES MM | C INCHES MM | D INCHES MM |
|-------------|---------------|----------------|----------------|----------------|
| H-300 | 7.78 197.6 | 11.31 287.3 | 8.94 227.0 | 13.12 333.3 |
| HY-300 | 5.28 134.1 | 6.31 160.3 | 11.44 290.5 | 8.12 206.3 |

Lever Style Clutch



RAM-LOK® Clutch

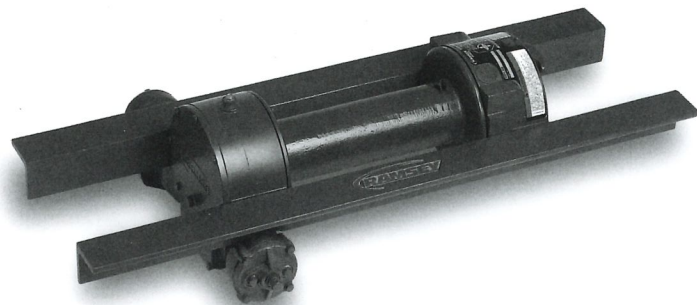
Note: Motor shown for H-300/HY-300 models only.

RAMSEY WINCH

HDG-350 Series



- Rated Line pull 10,000lbs
- Meets SAE-J706
- Recommended cable 7/16"
- Made in the USA

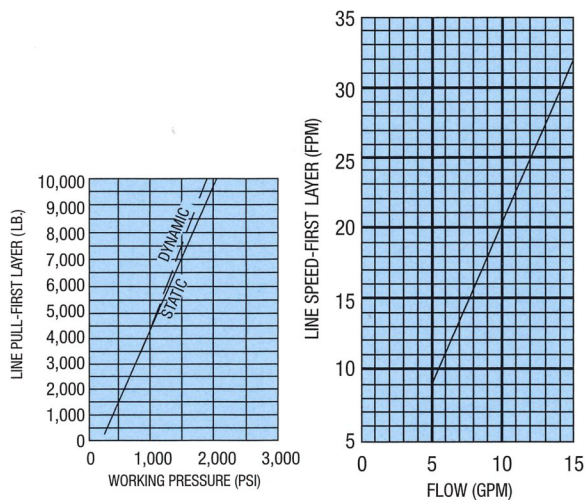


Applications

- Towing & Recovery
- Forestry
- Construction
- Petroleum
- Mining
- Refuse

Hydraulic Systems Performance

HDG-350 Models only



HDG-350R Performance
10,000 LB. duty rating
30:1 gear ratio
with 3.6 C.I.D. Motor

LEGEND
— DYNAMIC
— STATIC

* Performance based on a motor displacement of 3.6 CU in with 15 GPM maximum flow rate.

* Specifications: Conforms to SAE J706

| | |
|------------------------|--|
| Rated Line Pull | 10,000 lbs.....(4,536 kgs) |
| Gear Reduction | HDG-350..... 30:1 |
| Weight (without cable) | HDG-350.....110 lbs. (50 kgs) HDGY-350..... 105 lbs. (48 kgs) |
| Duty Cycle (ft.) | (ft.).....183 |

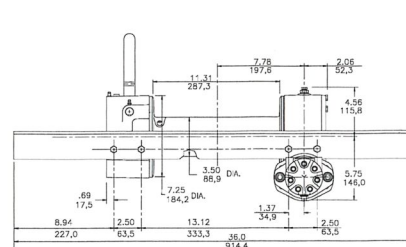
| LAYER OF CABLE | | 1 | 2 | 3 |
|---|--------------------|-----------------|----------------|----------------|
| *RATED LINE PULL PER LAYER | Lbs. Kgs. | 10,000 4,536 | 8,100 3,670 | 6,900 3,120 |
| *CABLE CAPACITY PER LAYER 11 5/16" DRUM | Ft. M. | 20 6.0 | 50 15.0 | 85 25.0 |
| *SHORT "Y" DRUM CABLE CAPACITY PER LAYER 6 5/16" DRUM | Ft. M. | 15 4.0 | 30 9.0 | 55 16.0 |
| *LINE SPEED | Worm RPM FPM (MPM) | FPM (MPM) | FPM (MPM) | FPM (MPM) |
| HDG-350 HDGY-350 | 750 32 (9.7) | 38 (11.5) | 44 (13.3) | |

* These specifications are based on recommended wire rope of 7/16 inch dia. EIPS cable.

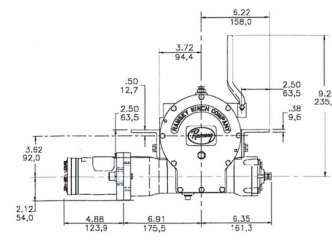
Overall Dimensions

HDG-350 Models only

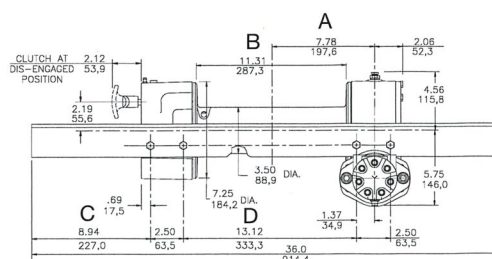
| WINCH MODEL | A INCHES MM | B INCHES MM | C INCHES MM | D INCHES MM |
|-------------|---------------|----------------|-----------------|----------------|
| HDG-350 | 7.78 197.6 | 11.31 287.3 | 8.94 227.0 | 13.12 333.3 |
| HDGY-350 | 5.28 134.1 | 6.31 160.3 | 11.44 290.50 | 8.12 206.30 |



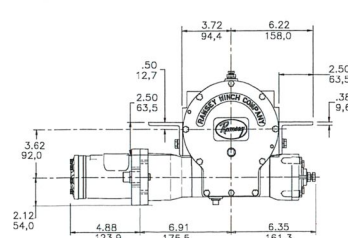
DIMENSIONS SHOWN ARE INCHES OVER MILLIMETERS



Lever Style Clutch



DIMENSIONS SHOWN ARE INCHES OVER MILLIMETERS



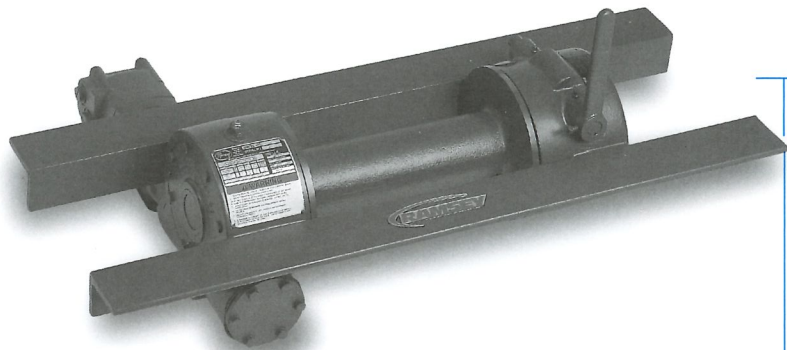
RAM-LOK® Clutch

RAMSEY WINCH



H-400 Series

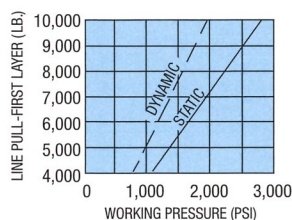
- Rated Line pull 10,000lbs
- Meets SAE-J706
- Recommended cable 7/16"
- Made in the USA



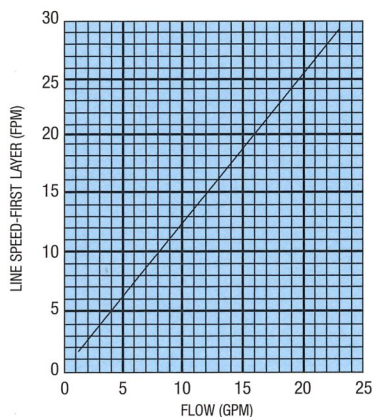
Applications

- Towing & Recovery
- Forestry
- Construction
- Petroleum
- Mining
- Refuse

Hydraulic Systems Performance H-400 Models only



H-400, HY-400 Performance*
10,000 LB. duty rating
29:1 gear ratio



LEGEND
— DYNAMIC
- - - STATIC

* Performance based on a motor displacement of 6.2 CU in with 23 GPM maximum flow rate.

Specifications

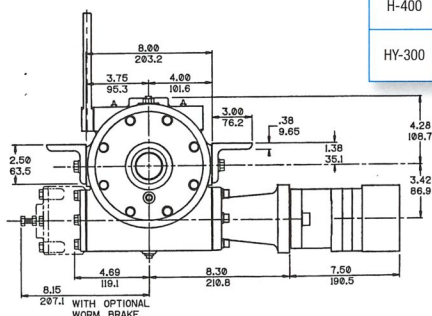
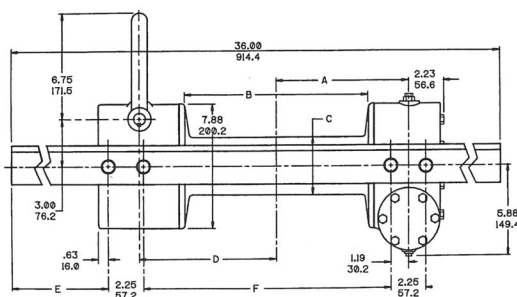
| | |
|------------------------|---|
| Rated Line Pull | 10,000 lbs.....(4,530 kgs) |
| Gear Reduction | 400/H-400.....29:1 |
| Weight | H-400/HY-400.....150 lbs. (68 kgs) HG-400/HY-400.....160 lbs. (73 kgs) |

| LAYER OF CABLE | | 1 | 2 | 3 | 4 |
|---|-----------|-------------------|----------------|----------------|------------------|
| RATED LINE PULL PER LAYER FOR H-400/HG-400 | Lbs. Kgs. | 10,000 4,530 | 8,200 3,710 | 6,900 3,120 | 6,000 2,710 |
| RATED LINE PULL PER LAYER FOR HY-400/HGY-400 | Lbs. Kgs. | 10,000 4,530 | 8,300 3,760 | 7,100 3,210 | 6,200** 2,800 |
| *LONG DRUM CABLE CAPACITY PER LAYER 11 5/8" DRUM H-400/HG-400 | Ft. M. | 25 7.0 | 55 16.0 | 90 27.0 | 130 39.0 |
| *SHORT "Y" DRUM CABLE CAPACITY PER LAYER 8 3/4" DRUM HY-400/HGY-400 | Ft. M. | 20 6.0 | 45 13.0 | 70 21.0 | 105** 31.0 |
| LINE SPEED | Worm RPM | 1 | 2 | 3 | 4 |
| H-400/HG-400 | FPM MPM | 840 33 10.0 | 40 12.0 | 47 14.0 | 53 16.0 |
| HY-400/HGY-400 | FPM MPM | 840 34 10.5 | 40 12.3 | 47 14.5 | 54** 16.6 |

* These specifications are based on recommended 7/16 inch (9mm) EIPS cable.

** 4th layer does not conform to SAE J706

Overall Dimensions H-400 Models only



| WINCH MODEL | A INCHES MM | B INCHES MM | C INCHES MM | D INCHES MM | E INCHES MM | F INCHES MM |
|-------------|---------------|----------------|---------------|---------------|---------------|----------------|
| H-400 | 8.44 214.4 | 11.63 295.4 | 3.63 92.2 | 8.75 222.3 | 7.87 199.9 | 15.75 400.1 |
| HY-300 | 7.00 177.8 | 8.75 222.3 | 4.00 101.6 | 7.32 185.9 | 9.31 236.5 | 12.88 327.2 |

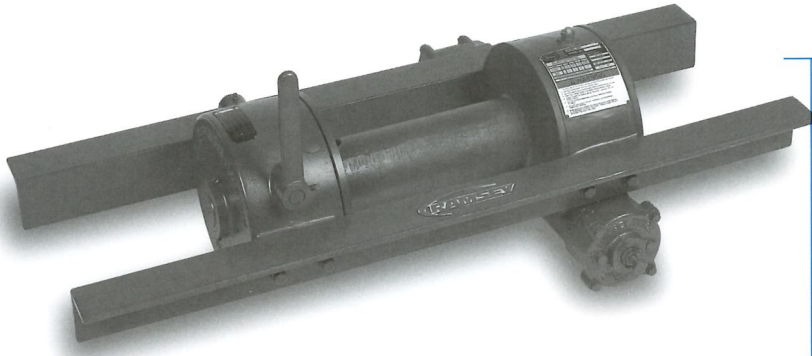
Note: Motor shown for H-400/HY-400 models only.

RAMSEY WINCH



H-600 Series

- Rated Line pull 12,000lbs
- Recommended cable 1/2"
- Meets SAE-J706
- Made in the USA

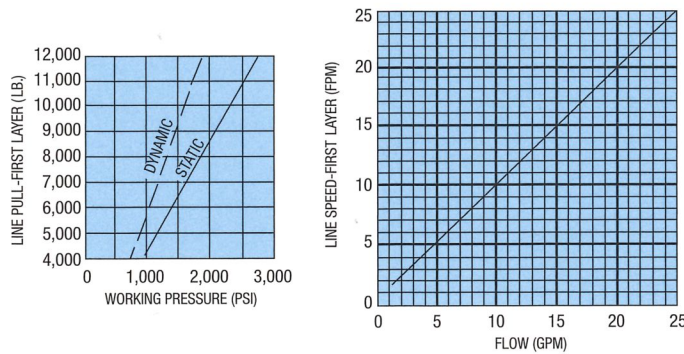


Applications

- Towing & Recovery
- Forestry
- Construction
- Petroleum
- Mining
- Refuse

Hydraulic Systems Performance

H-600 Models only



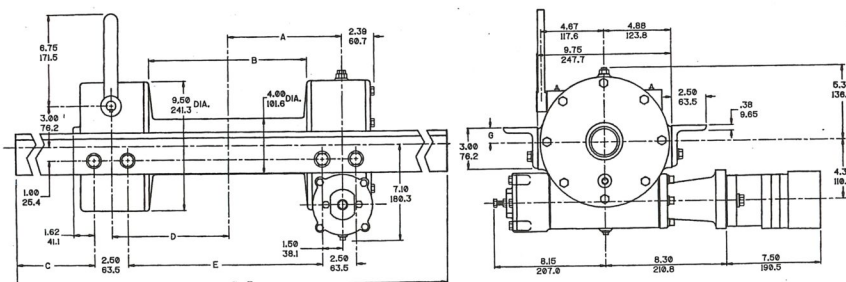
H-600, HY-600, HX-600 Performance* 12,000 LB. duty rating 40:1 gear ratio

LEGEND
 — DYNAMIC
 - - - STATIC

* Performance based on a motor displacement of 6.2 CU in with 25 GPM maximum flow rate.

Overall Dimensions

H-600 Models only



DIMENSIONS SHOWN ARE INCHES OVER MILLIMETERS

Specifications

| | |
|-----------------|-------------------------------|
| Rated Line Pull | 12,000 lbs..... (5,430 kgs) |
| Gear Reduction | H-600.....40:1 |
| Weight | H-600..... 185 lbs. (84 kgs) |
| | HY-600..... 180 lbs. (82 kgs) |
| | HX-600.....195 lbs. (80 kgs) |

| LAYER OF CABLE | | 1 | 2 | 3 | 4 | 5 ** | |
|---|------------|----------|-------|-------|-------|-------|------|
| RATED LINE PULL PER LAYER H-600 | Lbs. | 12,000 | 9,800 | 8,300 | 7,200 | 6,300 | |
| | Kgs. | 5,430 | 4,430 | 3,750 | 2,850 | 2,850 | |
| *STANDARD DRUM CABLE CAPACITY PER LAYER 11 3/4" DRUM H-600 | Ft. | 20 | 55 | 90 | 130 | 180 | |
| | M. | 6.0 | 16.0 | 27.0 | 39.0 | 54.0 | |
| *SHORT "Y" DRUM CABLE CAPACITY PER LAYER 8 3/4" DRUM HY-600 | Ft. | 15 | 40 | 65 | 95 | 135 | |
| | M. | 4.0 | 12.0 | 19.0 | 28.0 | 39.0 | |
| *LONG DRUM CABLE CAPACITY PER LAYER 14 11/16" DRUM HX-600 | Ft. | 30 | 65 | 110 | 165 | 225 | |
| | M. | 9.0 | 19.0 | 33.0 | 50.0 | 68.0 | |
| LINE SPEED | | Worm RPM | 1 | 2 | 3 | 4 | 5 |
| H-600 HY-600 HX-600 | FPM MPM | 890 | 25 | 31 | 37 | 42 | 48 |
| | | | 7.6 | 9.4 | 11.2 | 12.7 | 14.5 |

* These specifications are based on recommended 1/2 inch (13mm) EIPS cable.

** 5th layer does not conform to SAE J706

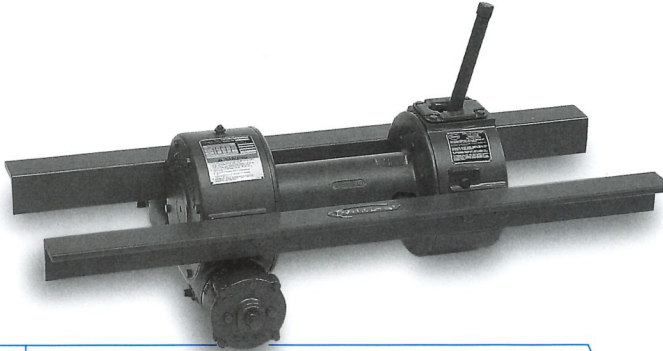
| WINCH MODEL | A INCHES MM | B INCHES MM | C INCHES MM | D INCHES MM | E INCHES MM | F INCHES MM | G INCHES MM |
|-------------|----------------|----------------|----------------|----------------|----------------|-----------------|--------------|
| H-600 | 8.44 214.4 | 11.75 298.5 | 10.31 262.0 | 8.75 222.3 | 14.44 366.7 | 40.00 1016.0 | 1.13 28.7 |
| HY-600 | 7.00 177.8 | 8.75 222.3 | 9.72 246.9 | 7.31 185.7 | 11.56 293.7 | 36.00 914.4 | 1.06 26.9 |
| HX-600 | 10.12 257.0 | 14.69 373.1 | 10.63 270.0 | 10.41 264.4 | 17.75 450.9 | 44.00 1117.6 | 1.06 26.9 |

RAMSEY WINCH

H-700 Series



- Rated Line pull 15,000lbs
- Recommended cable 9/16"
- Meets SAE-J706
- Made in the USA

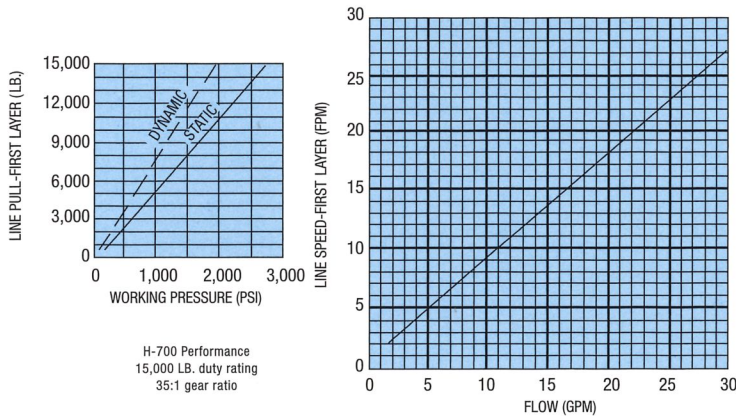


Applications

- Towing & Recovery
- Forestry
- Construction
- Petroleum
- Mining
- Refuse

Hydraulic Systems Performance

H-700 Models only



* Specifications: Conforms to SAE J706

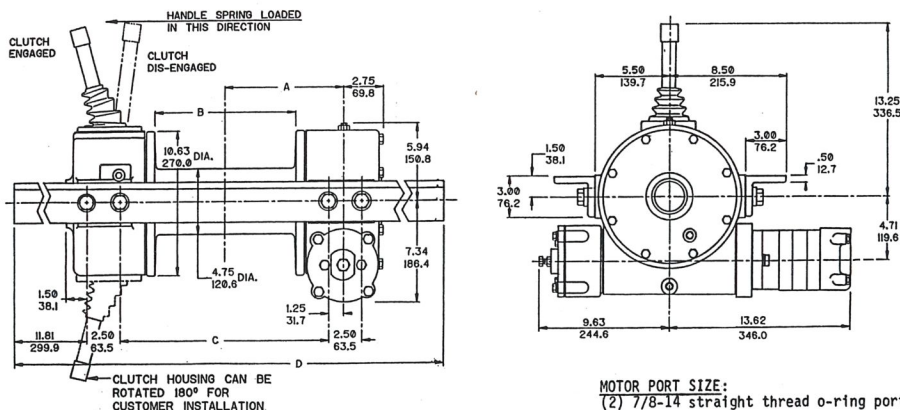
| | |
|-----------------|-------------------------------|
| Rated Line Pull | 15,000 lbs.....(6,790 kgs) |
| Gear Reduction | All Models.....35:1 |
| Weight | H-700.....258 lb. (117 Kgs.) |

| LAYER OF CABLE | | 1 | 2 | 3 | 4 | 5** |
|--|-----------------------|-----------------|-----------------|-----------------|----------------|----------------|
| RATED LINE PULL ALL MODELS | Lbs Kgs | 15,000 6,790 | 12,300 5,570 | 10,500 4,750 | 9,100 4,120 | 8,100 3,660 |
| *CABLE CAPACITY PER LAYER 11" DRUM H-700 | Ft. M. | 20 6.0 | 50 15.0 | 85 25.0 | 125 38.0 | 170 51.0 |
| *CABLE CAPACITY PER LAYER 16" DRUM HX-700 | Ft. M. | 35 10.0 | 75 22.0 | 125 38.0 | 185 56.0 | 250 76.0 |
| LINE SPEED | Worm RPM | 1 | 2 | 3 | 4 | 5** |
| H-700 | FPM MPM (30GPM) | 713 8.2 | 33 10.0 | 38 11.5 | 44 13.3 | 50 15.2 |

* These specifications are based on recommended cable of 9/16 inch (14mm) 6x19 EIPS cable.

** Fifth layer does not conform to SAE J706.

Overall Dimensions H-700 Models only



| WINCH MODEL | A INCHES MM | B INCHES MM | C INCHES MM | D INCHES MM |
|-------------|----------------|----------------|----------------|-----------------|
| H-700 | 8.68 220.4 | 11.00 279.4 | 15.38 390.6 | 44.00 1117.6 |
| HX-700 | 11.8 284.0 | 16.00 406.4 | 20.38 517.6 | 49.00 1244.6 |

RAMSEY WINCH



H-800 Series

- Rated Line pull 20,000lbs
- Recommended cable 5/8"
- Meets SAE-J706
- Made in the USA

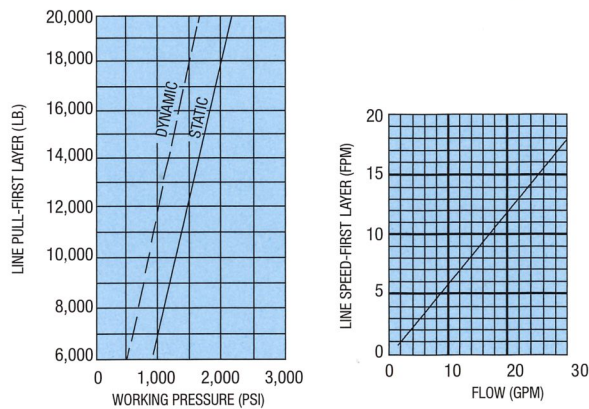


Applications

- Towing & Recovery
- Forestry
- Construction
- Petroleum
- Mining
- Refuse

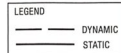
Hydraulic Systems Performance

H-800 Models only



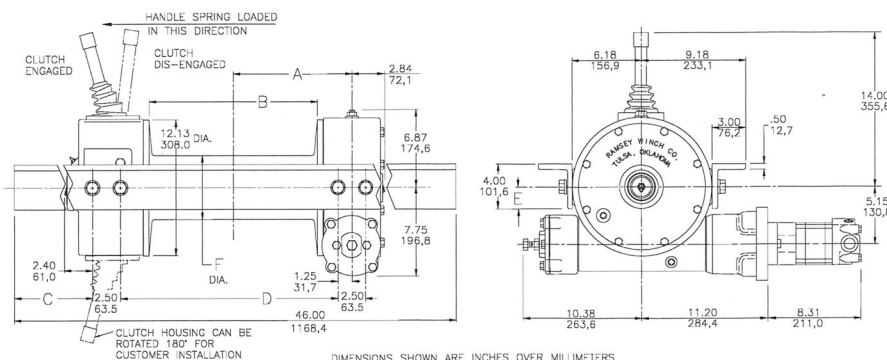
H-800, HY-800 Performance*
20,000 LB. duty rating
40:1 gear ratio

* Performance based on a motor displacement of 14.9 CU in with 30 GPM maximum flow rate.



Overall Dimensions

H-800 Models only



Specifications

| | |
|-----------------|-------------------------------|
| Rated Line Pull | 20,000 lbs.....(9,060 kgs) |
| Gear Reduction | H-800.....40:1 |
| Weight | H-800.....330 lbs. (150 kgs) |
| | HY-800.....325 lbs. (148 kgs) |

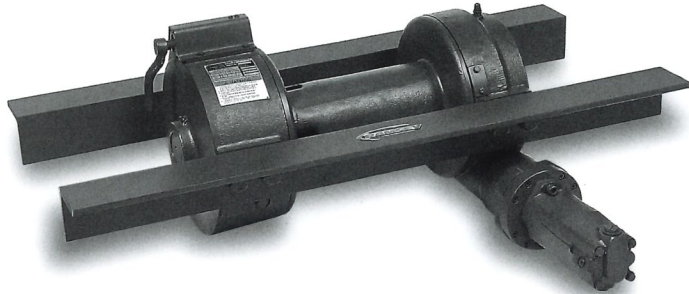
| LAYER OF CABLE | | 1 | 2 | 3 | 4 | 5 ** | |
|--|------|----------|--------|--------|--------|--------|------|
| RATED LINE PULL PER LAYER | Lbs. | 20,000 | 16,600 | 14,200 | 12,400 | 11,000 | |
| | Kgs. | 9,060 | 7,510 | 6,430 | 5,610 | 4,980 | |
| *CABLE CAPACITY PER LAYER 15" DRUM H-800 | Ft. | 35 | 75 | 125 | 180 | 240 | |
| | M. | 10.0 | 22.0 | 38.0 | 54.0 | 72.0 | |
| *CABLE CAPACITY PER LAYER 9 3/8" DRUM HY-800 | Ft. | 20 | 45 | 75 | 110 | 150 | |
| | M. | 6.0 | 13.0 | 22.0 | 33.0 | 45.0 | |
| *LINE SPEED | | Worm RPM | 1 | 2 | 3 | 4 | 5 ** |
| H-800 | FPM | 460 | 18 | 22 | 26 | 29 | 33 |
| | MPM | (30GPM) | 5.4 | 6.6 | 7.9 | 8.8 | 10.0 |
| HY-800 | FPM | 460 | 18.4 | 21 | 25 | 28 | 31 |
| | MPM | (30GPM) | 5.5 | 6.3 | 7.6 | 8.5 | 9.4 |

* These specifications are based on recommended 5/8" (16mm) EIPS cable.

** 5th layer does not conform to SAE J706

| WINCH MODEL | A INCHES MM | B INCHES MM | C INCHES MM | D INCHES MM | E INCHES MM | F INCHES MM |
|-------------|----------------|----------------|----------------|----------------|---------------|---------------|
| H-800 | 10.62 269.7 | 15.00 381.0 | 13.81 350.7 | 19.38 492.2 | 4.00 101.6 | 5.69 144.5 |
| HY-800 | 7.75 196.8 | 9.44 239.8 | 13.68 347.4 | 13.63 346.2 | 4.00 101.6 | 5.50 139.7 |

RAMSEY WINCH



H-930 Series



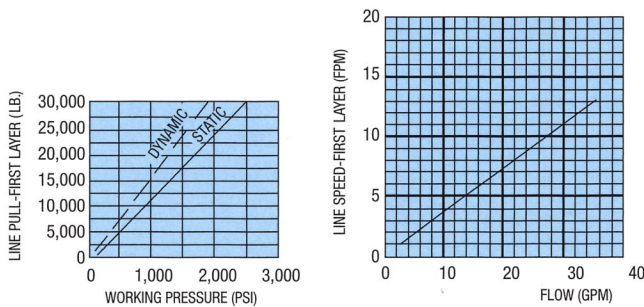
- Rated Line pull 30,000lbs
- Recommended cable 3/4"
- Meets SAE-J706
- Made in the USA

Applications

- Towing & Recovery
- Forestry
- Construction
- Petroleum
- Mining
- Refuse

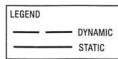
Hydraulic Systems Performance

H-930 Models only



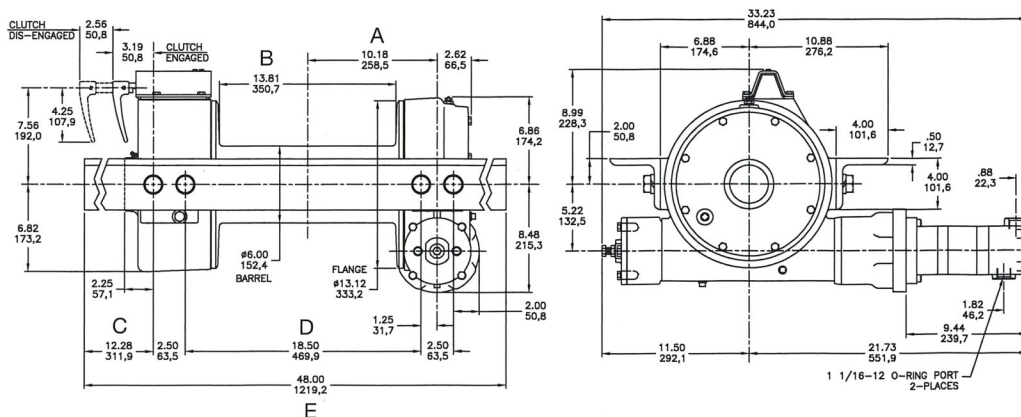
H-930 Performance
30,000 LB. duty rating
41:1 gear ratio

* Performance based on a motor displacement of 24 CU in with 35 GPM maximum flow rate.



Overall Dimensions

H-930 Models only



* Specifications: Conforms to SAE J706

| | |
|-----------------|-------------------------------|
| Rated Line Pull | 30,000 lbs.....(13,590 kgs) |
| Gear Reduction | All Models.....41:1 |
| Weight | H-930.....515 lb. (238 Kgs.) |

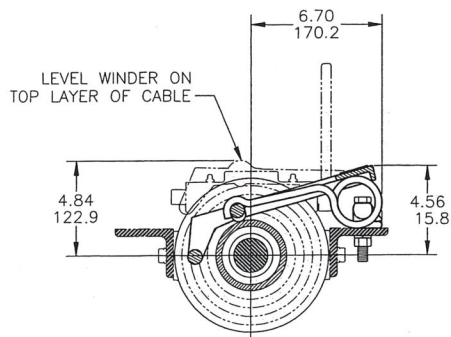
| LAYER OF CABLE | | 1 | 2 | 3 | 4 | |
|----------------------------|----------|---------|--------|--------|--------|-----|
| RATED LINE PULL ALL MODELS | Lbs | 30,000 | 24,500 | 20,700 | 18,000 | |
| | Kgs | 13,590 | 11,090 | 9,370 | 8,150 | |
| *CABLE CAPACITY ALL MODELS | Ft. | 25 | 65 | 105 | 155 | |
| | M. | 7.0 | 19.0 | 31.0 | 47.0 | |
| LINE SPEED | Worm RPM | 1 | 2 | 3 | 4 | |
| | FPM | 335 | 13.0 | 17.6 | 20 | 24 |
| H-930 13 7/8" DRUM | MPM | (35GPM) | 3.9 | 5.3 | 6.0 | 7.2 |

* These specifications are based on recommended cable of 3/4 inch (19mm) 6x19 EIPS cable.

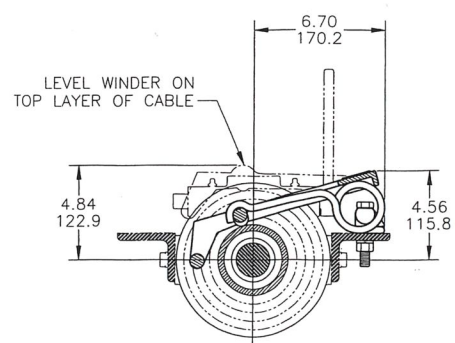
| WINCH MODEL | A INCHES MM | B INCHES MM | C INCHES MM | D INCHES MM | E INCHES MM |
|-------------|-------------|-------------|-------------|-------------|-------------|
| H-930 | 10.18 258.5 | 13.81 350.7 | 12.28 311.9 | 18.50 469.9 | 48 1219.20 |

Options For Ramsey Hydraulic Worm Gear Winches

Model H200/H300 Level Winder

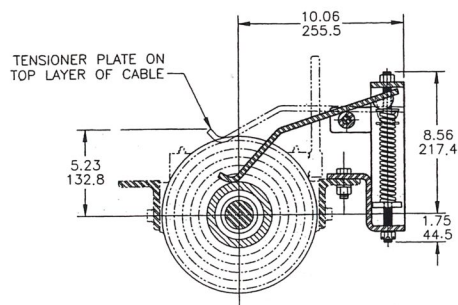


Model H400 Level Winder

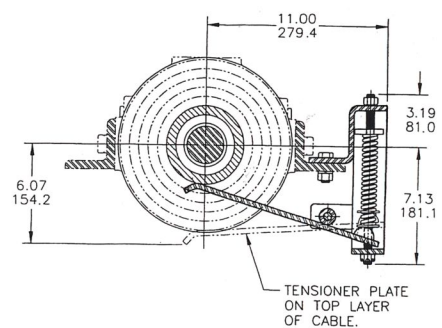


Spring applied cable tensioners (available as shown)

Model H600 Cable Tensioner



Model HX-700 Cable Tensioner



Model H-800 Cable Tensioner

